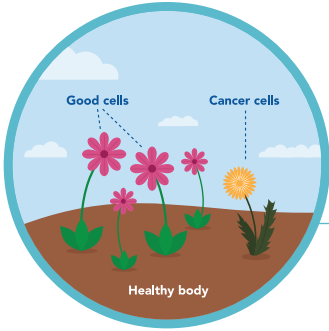
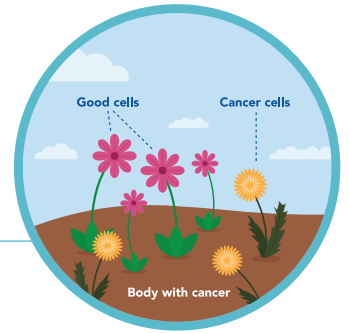


What is Immuno-Oncology and how is it different?



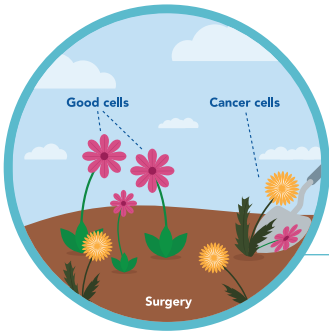
Healthy body

Imagine your body is a garden, and your immune system is the soil. When you're healthy, the soil is able to prevent weeds from growing out of control.



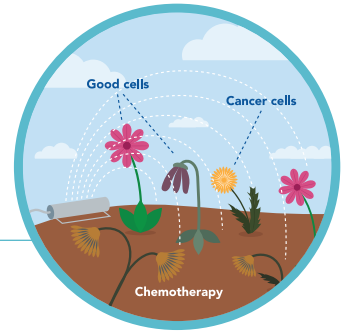
Body with cancer

Cancer cells are like weeds. The soil can allow weeds to grow and spread, and the entire garden can suffer as plants compete for space and nutrients.



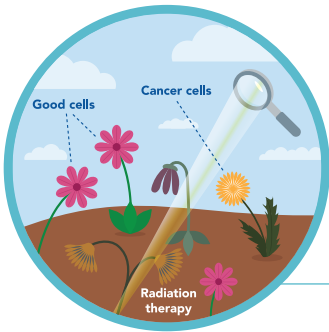
Surgery

Surgery can remove weeds, but can disturb the good plants and leave weed roots behind.



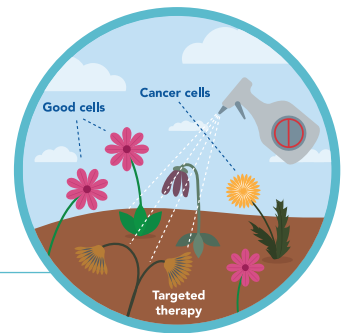
Chemotherapy

Chemotherapy is like spraying a general weed killer. It may not kill all the weeds, and may harm good plants.



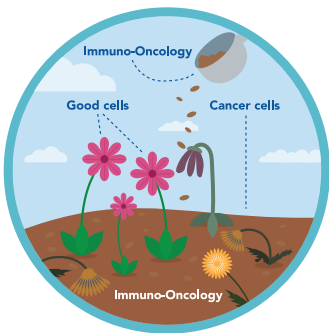
Radiation

Radiation is like increasing the power of the sun to specifically dry out the weeds, but some of the good plants can also be damaged.



Targeted therapy

With targeted therapy, weeds are directly sprayed with weed killer. Good plants may still be damaged.



Immuno-Oncology

Instead of targeting the weeds, Immuno-Oncology is like adding a weed-control fertilizer to the soil, enriching it to help control weeds. But too much fertilizer might harm your garden.

To learn more, visit www.immunooncology.com

Bristol Myers Squibb: At the forefront of **Immuno-Oncology** research

